



Schools' Programme 2024

Enabled by
Due Drop Foundation and Vector

Kia ora

Welcome to our 2024 Schools' Programme! Through Due Drop Events Centre and Vector Wero Whitewater Park we are able to continue to commit to providing high quality educational events, learning experiences outside the classroom and subsidised activities now serving 100,000 students and youth as of 2023.

We are so pleased our goal of 100,000 students has been attained two years earlier than anticipated! We now look ahead to a new year with new targets of reaching our community with our schools' programme.

Each year we aim to partner with new workshops and programme providers that we believe will produce amazing opportunities for students to learn and grow from. For 2024 we are excited to partner with Duffy Books in Schools to bring you a Role Model Day in the Sir Woolf Fisher Arena. This will be held across two days providing access for all schools in the South Auckland community.

As we add new programmes each year, we also build on the programmes that have been with us before. In 2023, we hosted the National Youth Theatre where they brought their show Moana JR to the

BNZ Theatre; this was an incredible show with students from South Auckland participating in this show either by helping backstage or on stage acting and singing! We are thrilled to have them back in 2024 to see another fantastic show.

Our mission at Vector Wero Whitewater Park is to provide the opportunity for all students in South Auckland to learn about the power of moving water by rafting, river crossing and swimming down our Tamariki river in a safe and controlled, urban environment. By partnering with John Walker Find your Field of Dreams we were able to sponsor 4,500 students to come through our park and participate in our activities. These activities teach important survival life skills while giving students a fantastic and memorable experience!

We invite you to join us and take full advantage of all our programmes. These workshops, activities and events are very popular, so we encourage you to book early and contact our team today.

Morgan Darkwa
Community and Marketing Manager

Contents

Due Drop Events Centre Creative Arts Programme

RNZB Ballet In A Box

RNZB DancewithMe

Experience Pacifica

Tim Bray Theatre Company

Atamira Dance Company

Manukau Symphony Orchestra

National Youth Theatre

Eye on Nature Wearable Arts Show

Duffy Books in Schools

Nightsong

Community and family Events

Funfest

Circus Quirkus

Wero Open Day

Vector Wero Whitewater Park River Safety and sports programme

River Crossing

Rafting

Kayaking

Tubing

Creative Arts Programme

The Due Drop Events Centre Schools' Programme has three streams. The Experience Stream, the intensive Stream, and the Access Stream.

The Experience Stream features a series of fully sponsored programmes available to students in year 1-13. Students participate for free in authentic arts-based learning experiences. These are led by professional arts practitioners, artisans and established arts organisations with workshops based on educational experiences in dance, drama, traditional arts, and visual arts. These programmes are designed to complement the New Zealand Ministry of Education's Learning Experiences Outside the Classroom (LEOTC) making them an excellent school-based learning experience that cannot be replicated in the classroom environment.

We also partner and collaborate with arts organisations which have existing educational programmes. Our support and collaboration allow our partners' programmes to grow in quality and educate more students.

The Intensive Stream is comprised of initiatives in partnership with professional arts practitioners, educators and organisations. It is an artist residency programme where students have the opportunity to work with artists for an extended period of time.

The Schools' Programme also has an Access Stream. Under this programme, we fully or partially sponsor school productions to provide students with the experience of working in a professional theatre or arena.

Royal New Zealand Ballet

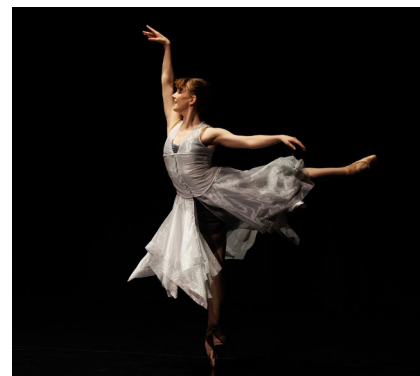
Ballet In A Box **Dance – Year 1-8**

Ballet in a Box is a magical introduction to the world of ballet for school children of all ages. These Royal New Zealand Ballet FREE 60-minute performances feature an hour of dance highlights and the chance to ask lots of questions.

We are pleased to also offer free dance workshops to groups attending these performances. Incorporating elements from the performances, these workshops at your school are a wonderful way to get your students dancing in a relaxed and comfortable environment. No previous dance experience required.

The relaxed performance of Ballet in a Box includes a sensory-friendly environment with NZ Sign Interpreter.

This performance features a more casual approach to the front of house etiquette and to noise in the auditorium. Best suited, but not limited to those on the autism spectrum, with special needs or other sensitivity issues who are looking for a comfortable environment to enjoy the performance. The aim of this performance is to minimize patrons' anxiety and to ensure their time in the theatre is safe and enjoyable.



Royal New Zealand Ballet

DancewithMe Dance – Years 4-8

The Royal New Zealand ballet is coming to Auckland for DANCEwithME!

An RNZB Dance Educator will work with your school to create a dance over a series of weeks, culminating in a shared performance at the Events Centre on Tuesday 17 September.

When: 8 weeks leading up to the 17 September. Time and days to be decided in discussion with each school.

Where: Dance workshops held at your school, with the performance being on the main stage at Due Drop Events Centre.

Cost: Free and transport provided and paid for.



Experience Pacifica

**Visual Arts and Social Sciences
Years 1-13**

25 – 27 March.

Inspired by traditional Pacific legends, this programme encourages students to share, experience and explore Pacific arts and culture. Students will learn basic drum beat patterns, dance movements, and have the opportunity to create woven works of art.

The Experience Pacifica Workshop programme is led by Pacifica Arts Centre and Pacifica Mamas and Papas. The session is approximately 2.5 hours and is suitable for all ages.



Nightsong

Live Theatre – Years 4-8.

Come on a backyard adventure with a cast full of critters and fantastical bugs – The Worm is sure to have students buzzing with wonder!

A little Worm's sudden encounter with a giant bird sparks a quest full of twists, turns and larger-than-life delights! However the journey to the surface is riddled with danger and takes the worm through a dark subterranean world full of empty streets and flea-bitten bars. He must dodge the sharp spade of the gardener, outsmart poisonous spiders and battle the ruler of the underworld, The Blind Rat and his henchman Snail.

Featuring original music performed live by Carnivorous Plant Society and extraordinary design, acclaimed theatre company Nightsong (Mr Red Light, Te Pō) brings their trademark visual style to this delightfully surreal and anarchically absurd show that will entertain and enthrall young and old alike.

Dates to be confirmed.



Tim Bray Theatre Company

Auckland's leading theatre for children.



Mrs Wishy-Washy

By **JOY COWLEY**
Adapted for stage by **TIM BRAY**
songs by **CHRISTINE WHITE**

Scrub-a-Dub with Mrs Wishy-Washy.

"Oh, lovely mud!" exclaim Mrs Wishy-Washy's farm animals Cow, Duck, and Pig. These beloved characters from Joy Cowley's series of picture books are about to come to life in a hilarious stage performance.

Date available:

- Tues 15 October – Fri 18 October
- 10:30am & 1:00pm

Show run time: 60 mins (no interval).



THE GREAT PIRATICAL RUMBUSTIFICATION

BY **MARGARET MAHY**
ADAPTED FOR THE STAGE BY **TIM BRAY**
SONGS BY **CHRISTINE WHITE**

Hoist the Flag of Fun and Mayhem. Shiver me timbers! The pirates are restless, yearning for a grand piratical adventure!

Date available:

- Tues 30 April – Fri 3 May
- 10:30am & 1:00pm

Show run time: 50 mins (no interval).

For more information and to register for seats to these shows please email education@timbray.org.nz or visit www.timbray.org.nz

Atamira Dance Company

Kori Purakau Workshops Dance – Years 1-8

Kori Purakau (Dancing with Mythology) is a half-day workshop programme introducing students to basic choreographic processes that explore telling a story through dance and movement.

Ideal for students from year 1 – 8, it derives inspiration from Pou Kapua or Cloud Pillar, the Waka Pacific Trust's stunning 21-metre carving which narrates the Māori Myth of the great chieftain Kupe, the creation stories of Ranginui and Papatuanuku and the legend of Maui.

The dance workshop series is led by Atamira Dance company. Sessions are approximately 2.5 hours in duration.



Maximum of 60 students per session. Maximum of 1 session can be booked by 1 school due to limited availability.

Dates available:

- 12, 14 & 15 February
- 29, 30 & 31 October

For more information and to register your interest please visit:

www.duedropeventscentre.org.nz/koripurakau



Manukau Symphony Orchestra

8 – 9 April

Live Symphonic music is a thrilling experience for all ages. For children especially, studies have shown listening and engaging with orchestral music to have a positive response with children feeling calm, relaxed, and engaged regardless of what is being played. Many children also feel inspired to learn an instrument after attending such events.

MSO INSPIRE is collaborating with Due Drop Events Centre to bring four short, entertaining concerts to school children from 7-11 years old across South Auckland.

These concerts will feature well-known pieces for children alongside stories set to music with an entertaining narrator. Performed by the Manukau Symphony Orchestra, conducted by Uwe Grodd.



National Youth Theatre

30 August

The National Youth Theatre is New Zealand's premier musical theatre training programme for rangatahi aged 7-21.

After the success of our production Disney's Moana JR in September 2023 – two sold out school shows and four public shows. We are happy to announce we will be back in August 2024 with Disney's The Lion King JR.

We will be bringing the African savanna to life on stage at the Due Drop Events Centre with Simba, Rafiki and an unforgettable cast of characters as they journey from Pride Rock to the jungle and back again in this inspiring, coming-of-age tale. The Lion King JR. features classic songs from the Broadway musical

and animated feature film, including "I Just Can't Wait to Be King", "He Lives in You", and "Hakuna Matata".

Registrations to be part of the cast open in 2024, sign up to our newsletter at www.nyt.nz

Or be part of the audience – bookings are now open to schools, email schoolbookings@nyt.nz for more information and to book.



Eye on Nature Wearable Arts Show

**Sustainable arts live fashion show
Years 1-13**

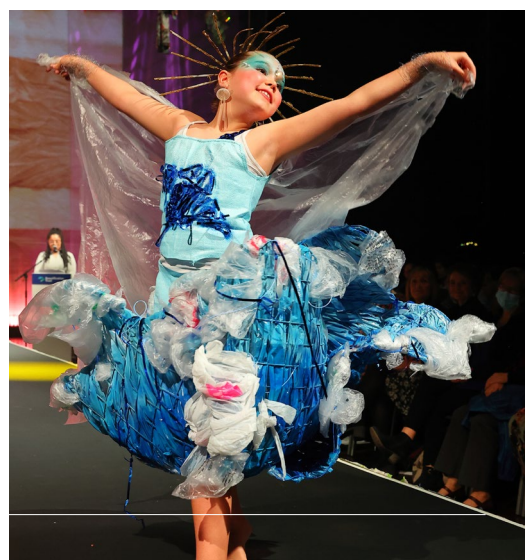
The Beautification Trust is proud to present Wearable Arts, part of the Eye on Nature schools' programme.

An annual competition for Auckland primary and secondary school students held at Due Drop Events Centre. Students are challenged to create eco-friendly wearable art around the Eye on Nature theme, with \$3,700 in cash awarded to the winning schools.

Our young people are the kaitiaki of tomorrow. Eye on Nature Wearable Arts provides a vehicle where our youth can use their creative minds

through research and the arts to gain a greater understanding of environmental issues and the importance of caring and protecting their living environment.

The garments are judged at the Eye on Nature Wearable Arts Fashion Show. The showcase gives the tamariki and rangatahi the exciting experience of modelling their ecofriendly creations on a fashion runway in front of a live audience.



Duffy Role Model Extravaganza

12 – 13 August

Experience the first ever Duffy Role Model Extravaganza!

This year marks the thrilling 30th anniversary of Duffy Books in Homes, and we're gearing up for an exciting week of Role Model extravaganzas for all our Duffy South schools! We will be hand picking a team of our remarkable Role Models to inspire you with their extraordinary success stories, all while highlighting the power of reading.

There will be some surprise performances and a chance to win some incredible prizes! We can't wait to celebrate with you soon!



Community and Family Events

The Trust annually sponsors over 110 events, festivals, concerts, conferences, and programmes with full or subsidised rates for venue hire, equipment, labour, service fees and more.

This valuable support allows event organisers to further focus their resources on the production and delivery of excellent events to our community.



Funfest

14 – 22 January

Tens of thousands of people flock every January to celebrate the new year at Funfest, Auckland's only annual summer event with free entry, free parking, free rides, and free prizes.

The massive four-day festivity kicks off with an invitation for children with special needs and their families and hosts a family expo for well-being, health, education, and careers. It has steadily grown since it was first held at the Event Centre in 2017.

Funfest is about bringing families and communities together in a positive environment. There is simply no other event that compares with Funfest in terms of attractions, scale, and social responsibility.



Circus Quirkus

2 June

Circus Quirkus is an amalgamation of great world class Circus Acts.

Circus Quirkus is a Family Show!

Circus Quirkus is for Entertainment purposes only – enjoy at your own risk!

Circus Quirkus is Cool! Aerialists to Acrobats, Clowns and Contortionists, Whimsical Juggling Hula Hoops, and more!

Our captivating, Fun loving, Circus Quirkus New Zealand performers will amaze you and your family with their incredible skills, Fun for the entire family!

Aquatic Extravaganza Day

This annual event welcomes the community to experience a free day of aquatic sport and activities.

The Aquatic Extravaganza Day is a free day for the entire family to come along and experience aquatic sport and water safety by participating in rafting, kayaking, paddleboarding and much more!

In collaboration with key partners in the aquatics industry, the event provides members of the public with free water experiences, lessons and resources to keep themselves safer in, on, and around water.



Introduction to White Water

Vector Wero Whitewater Park displays a long-standing commitment to providing the largest schools and community programme for white water experience in the world.

Introduction to White Water is a series of programmes that provides children and young people the opportunity to experience a range of water activities. This programme stems from Vector Wero's ongoing commitment to lowering the national drowning toll by partnering with not-for-profit and non-governmental organisations to give children and young people confidence and survival skills to be better prepared and able to safely enjoy the water.

Vector Wero Whitewater Park opens its doors for sessions on river safety theory and application, experiential river crossing, rafting, kayaking and stand-up paddle boarding. Flatwater activities are held at the Lake, while white water activities are held on the Grassroots Tamariki River, the Grade 1-2 river course, and/or the River Rush, the Grade 3 river course.

Those participating in the programmes are briefed with the introductory and safety video of the park alongside further briefings with qualified outdoor educationalists and guides. This will cover terminologies, river hydrology and hazards, rescue techniques and safety guidelines and includes question and answer time to ensure all participants have a full understanding and can get the most out of the experience.

Vector Wero Whitewater Park partners with John Walker Find your Field of Dreams to provide schools access to sponsored rates. For more information on this funded opportunity please visit www.wero.org.nz/schools-community



Wero | River Crossing and Safety

Physical Education and Outdoor Education Years 5-13

This programme has a particular focus on safety in moving water.

It begins with a safety briefing covering terminologies, river hydrology and hazards, rescue techniques and safety guidelines alongside question and answers time to ensure all participants have confidence and understanding of the activity.

Following this, students will move to the Grassroots Tamariki River for a realistic river crossing experience. The students will then buddy up and learn and prepare how to cross

the Whitewater River safely. Our experienced guides will assist students in identifying how they can assess an unfamiliar situation, make an informed decision, and succeed with confidence in various situations.

To conclude the session, an opportunity to swim the river experiencing the power of the water will be given as well as instruction on how to safely exit the river.



Wero | Rafting

Physical Education and Outdoor Education
Years 5-13

In this programme, students will learn to paddle in unison, dig in and control the inflatable raft in the most exhilarating environment.

Students will need to work together as they launch into an eight-person raft and navigate themselves through the Grassroots Tamariki River where they will raft down the river and perform river swimming whilst learning how to identify potentially hazardous waters/river systems. The option to book River Rush Rafting is also available

(for students 13 years and over) which also includes an exciting drop down the Pump waterfall, the highest man-made rafting waterfall in the world.

This programme also teaches students how to assess a difficult situation and problem-solving life skills.



Wero | Kayaking

Physical Education and Outdoor Education
Years 5-13

Our guides will teach students basic kayaking skills to help build their confidence and test their limits in flat water situations.

Students have the opportunity understand water safety equipment and paddle around the lake in their kayak and participate in various activities to develop these skills.

Assessments and other customised sessions may be designed with the team to meet school and curriculum requirements.



Tubing

Physical Education and Outdoor Education
Years 5-13

A fresh take on the lazy river, tubing down the Grassroots Tamariki River is anything but lazy!

Float down the rapids in our inflatable tubes, the activity is a step up in adventure from our Tamariki Rafting.

The students start off by swimming the river learning to take control of their tubes, while our qualified raft guides closely supervise. Adventurous, but safe enough to teach assessment and problem solving skills – a great introduction to white water! Over the course of an hour, groups will run the river multiple times with the opportunity to swim the rapids for those brave enough!

Stay tuned for more
School Programmes
to be released!





WAKA PACIFIC

Naming Right Sponsors



Major Sponsors



Programme Partners



www.wakapacific.org.nz